

Math 60 – Introductory Algebra, 1st Term Spring 2018

Southeast Campus
Portland Community College
P.O. Box 19000
Portland, OR 97280-0990

Math 60
CRN 20131, 4 credits
M, W 9 – 11:20 am
Tabor Hall 140

Instructor: **Cara Lee**
Office: **Student Commons 214**
Phone/Voicemail: **971-722-3773**
Email: **cara.lee@pcc.edu**
Notes Website: www.caraleemath.com

Student Office Hours:
Tuesdays, Noon – 1:00 pm in the Tutoring Center
Wed/Thurs, 11:30 – 12:30 pm in SCOM 214,
and before and after class, during breaks and
by appointment. Just ask or email☺

Welcome! I value differences and appreciate working with students of all races, ethnicities, ages, sexual orientations, gender identities and expressions, abilities, sizes, shapes and backgrounds. I enjoy connecting with people and I plan to learn as much from you as I hope you will learn from the experience of this class. PCC is a sanctuary college and you can read more at <https://www.pcc.edu/resources/undocumented-students/>.



What is a Syllabus?

This syllabus is our contract for the course. It explains how your grade is determined and what to do in situations like absences, emergencies, weather events, etc. It is a resource guide for the class and campus. It also gives you a feel for my philosophy and the atmosphere of the course.

Use the Syllabus as Your First Resource

Keep the syllabus in the front of your binder and use it as a resource. If you have a question about a due date, make-up policy or campus resource, look to the syllabus first to see if the information is there. If it is not there, or you are still not sure, please email me. The syllabus can also be found in D2L and on my notes website.

*Pure mathematics is,
in its way, the poetry
of logical ideas.*
~Albert Einstein

Teaching Philosophy

We are going to experiment and play with math. I believe in trying things to see what happens. Math is about numbers and patterns and creative thinking, not just the right answer. Your personal connection to math and experience of math is important and valid. There are times when math is rigid and there are times when math is creative. For some students, Math 60 is a review. For some students, it is an opportunity to heal past math experiences and build a new foundation in algebra. Please allow yourself to be frustrated, not know the answer, ask questions and wonder about larger patterns. Math is skill-based rather than information-based, so it takes practice, patience and persistence to succeed.

Grading Philosophy

You are a person separate from your grade. A grade is just a measure of skills and the communication of those skills. I am looking for everything that you do right and assign partial to full credit. It is better to write something than nothing. There are times when formatting is part of the answer (like order of operations and solving equations) and I will give you feedback to help you be prepared for the next course.

Aim High and Don't Stop! Students who pass with a C have a much lower success rate in the next math course. Aim for an A or a B and don't take a break from math courses. Keep going until you are done!

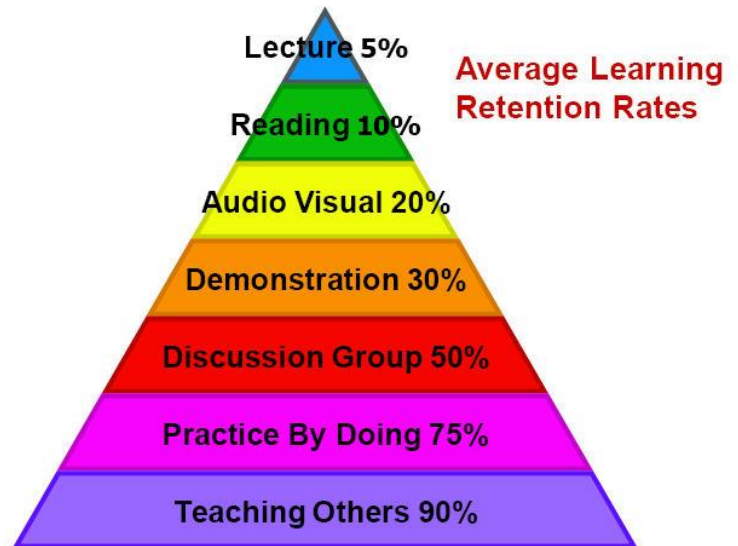
What is a flipped class?

In our class, that means the lecture and introductory learning takes place before class (as homework), and the harder problem-solving work (that is usually homework) takes place in class, where you have the guidance and help of classmates and the instructor. You will also have some online homework problems to reinforce your learning.

Why is our class flipped?

The image on the right shows the average amount people retain when learning through lecture, reading, etc. It's not surprising that most people retain more by discussing, doing and teaching others. This is what I want to spend most of our valuable class time on. We can use technology for the lecture, audio visual and demonstrations, which are also very important.

Class Prep Assignment: You will get a class prep assignment for every class, except the first day of class. It will be a combination of watching videos, reading in the textbook and reflection questions. This will be turned in at the beginning of class for credit. These activities are carefully designed to prepare you for the group activities in class, and the online homework problems.



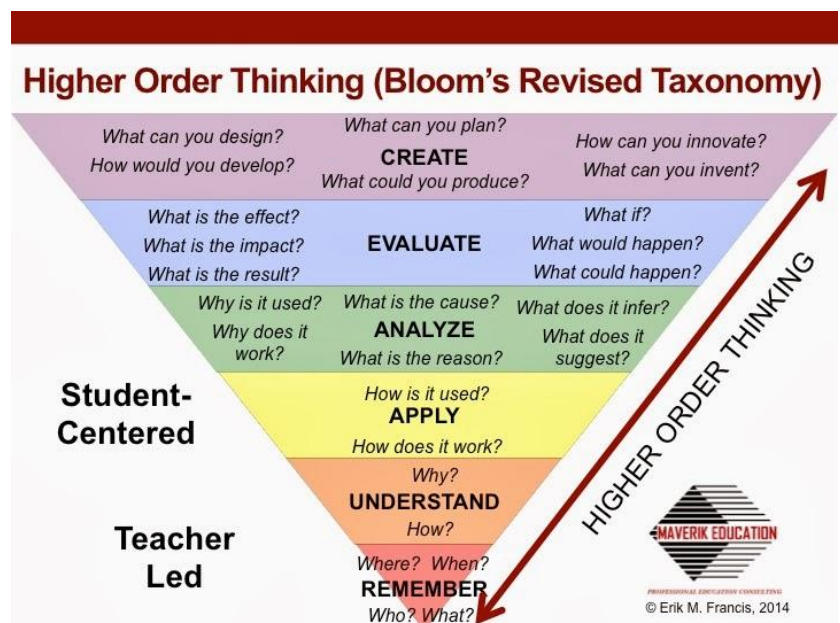
Source: National Training Laboratories, Bethel, Maine

3 parts of each class:

1. Warm-up
2. Group Activities
 - During this time, you can focus on group discussion, practice by doing and teaching others.
 - Record all your work on the activity pages for later reference.
3. Wrap-up: Sharing solutions, presenting, answering questions, look at the class prep assignment for the next class.

Set yourself up for success:

- ✓ Arrive 5-10 minutes early to help move tables and get settled in
- ✓ Be ready to start working with your group on time
- ✓ Be willing to work with all classmates and help everyone to be successful
- ✓ Make sure everyone is heard in the group and gets a chance to participate
- ✓ Ask lots of questions – questions can be as valuable as the answers
- ✓ Don't be afraid to try something, even if it might not work. Trial and error is valuable!
- ✓ Record all your practice and creative work so you can review it later.



Course Description, Outcomes and Prerequisites

<https://www.pcc.edu/ccog/default.cfm?fa=ccog&subject=MTH&course=60>

Required Materials

Textbook. *ORCCA: Open Resources for Community College Algebra, Volume 1 Spring/Summer 2018 Edition, Dated March 5, 2018*

Free online book: <http://spot.pcc.edu/math/orcca/orcca.html>

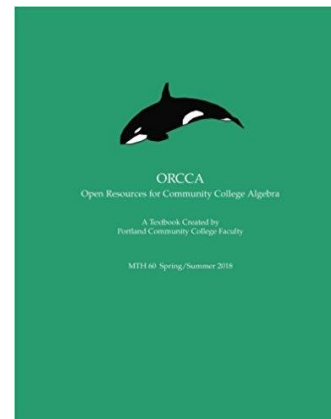
The paperback copy is optional and available from Amazon for \$12 + shipping, see D2L or my website for link

Free Webwork Online Homework System. You can access this from D2L.

Computers and Internet access are available on campus 7 days a week.

Computer Lab Hours: <https://www.pcc.edu/computer-labs/southeast/>

Calculator. A scientific calculator with radical and exponent functions is needed. If you need to buy one, the TI-30XS MultiView is recommended. No phones may be used during quizzes or tests.



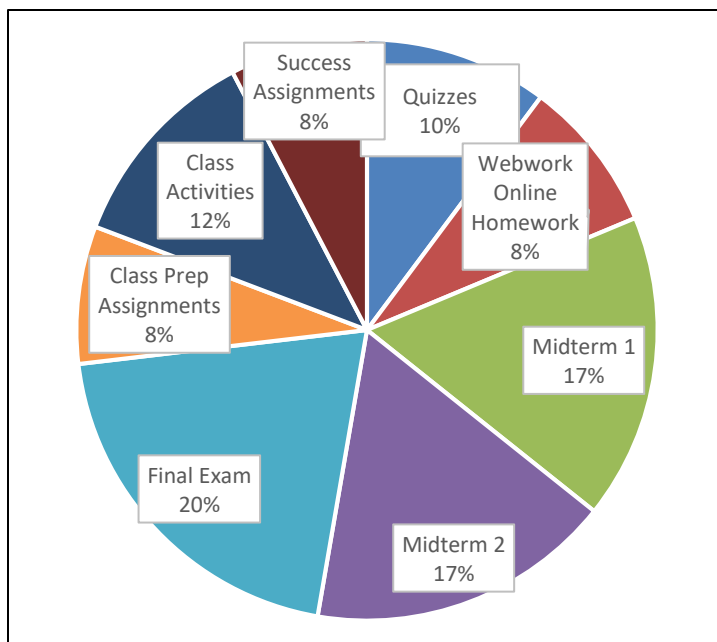
3-Ring Binder with dividers, Lined Paper, Pencils, Big Erasers!!, Colored pencils or pens, Mini-stapler

Grading System. Course grades will be based on the points shown below. ¹The lowest two scores will be dropped. *You must score 68% or higher on the final exam to pass the course with a C or higher.

<u>Course Components</u>	<u>Points</u>
Success Assignments	45
In Class Quizzes (2 lowest dropped)	60
WeBWork Online Homework	50
Class Prep Assignments (15 x 3 pts)	45
Class Activities (17 x 4 pts)	68
Midterms (100 each)	200
<u>Final Exam*</u>	<u>120*</u>
Total	588

Course Grades

- A** 90-100% of the points and 68% or higher on the final
- B** 80-89% of the points and 68% or higher on the final
- C** 70-79% of the points and 68% or higher on the final
- D** Below 68% on the final or less than 70% of the points overall
- F** Did not take the final and did not withdraw



Make-up policy. Class attendance and engagement is very important for your success. Communication is the most important thing if you are sick or have an emergency. You need to complete all work to be successful in the class. Read below for specific scenarios.

What do I do if...

I am late for class: Please come at any time! It is better to come for any part of class than not at all. If persistent lateness becomes an issue we will talk about it. Notify a classmate or the instructor if you are able but this is not required.

I need to leave early: Please let me know during class or by email.

I will be absent: Please let me know beforehand or afterward, as soon as you are able. Go to the notes website at www.caraleemath.com/math-60 and view any resources from that day after they are posted (usually by the end of the class day). Complete the notes and activities and show them to me to make up the points.

I will be absent and an assignment is due: Please get the assignment to me by the end of the day. Scan or take photos and email them to me. It can also be dropped off in my office in SCOM 214. If you are not able to complete it on time, please email me by the end of the day.

I missed Webwork deadlines: There are 84 extra credit problems in the chapter reviews to make up lost points. If you have missed more than that please talk with me.

I miss a quiz: Quizzes are only given during class because we go over them right away. The two lowest scores are dropped to allow for illness and emergencies. If you miss more than two, please talk with me to make up the points.

I miss a test: Please let me know in advance, or as soon as possible in an emergency. Do not wait until the next class because I want to give the test back. Make an appointment with the testing center, and let me know when your appointment is. Please let the testing center know if you need to cancel or reschedule an appointment with them.

Testing Center Info: Student Commons 118, testing.se@pcc.edu, 971-722-6277 or 6253
You will need to bring a photo ID. <https://www.pcc.edu/resources/testing/locations.html>

Class is cancelled due to weather, instructor illness or other circumstances: Please check your email as soon as you are able. We will not get to make up class time, so I will send resources and instructions for you to complete the homework and stay on schedule.

I feel lost, behind or frustrated with the class: Please talk to me or email me. I have been there, too, and I am here to help you. It's better to get help as soon as possible. Don't spin your wheels. Sometimes people think they don't belong in college, but that's not true. Getting stuck and working through it is part of college. It just takes college experience to know that. You can also talk with classmates and use other campus resources. Use the tutoring center and free online tutoring at <http://www.pcc.edu/resources/tutoring/etutor>.

Electronic Devices. You are encouraged to have a device with internet access for class activities, but it is not required. Use it only for class activities, please. I will ask you to put it away if it is distracting you from classwork.

Food and Drink. You may have beverages and cold snacks. Make sure you leave the classroom neat for the next class. Please do not bring hot food or other items that may disturb or distract others.

Graded Course Components

The suggested study guideline is 2 hours of homework/studying for each hour in class (10 hours/week for our class). This varies by student, so you may need more or less time.

Webwork Online Homework: Online homework assignments are due as shown on the course calendar and inside our course Webwork shell. Do your best to complete the homework problems for each section covered in class before the next time class meets. The next day's material will build upon the last. Write your steps down in your notebook or print a copy of the homework problems and write your work on that paper. Then you can study your work for the quizzes and tests.

If you get stuck or have a question, use the **email instructor button** at the bottom of the problem. That will allow me to see what you see and what you have tried. I will email you back. In the tutoring center you can ask a tutor to go to the computer with you for help.



1 1-Arithmetic with Negative Numbers

Previous Problem Problem List Next Problem

(1 point) BasicAlgebra/SignedNumbersArithmetic/AddSubtractNegativeNumbers10.4
Perform the given addition and subtraction:

a. $-18 - 9 + (-1) =$

b. $2 - (-15) + (-20) =$

[Solution:](#)

Note: You can earn partial credit on this problem.

Edit2 Edit3

Show: CorrectAnswers

Preview My Answers Check Answers Submit Answers Show me another

You have attempted this problem 0 times.
You have unlimited attempts remaining.

Show Past Answers

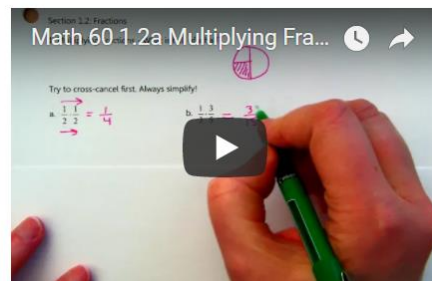
Email Instructor



Success Assignments: These are assignments that focus on your success to be completed during the term, as indicated on the course calendar.

Class Prep Assignments: A combination of videos, reading and personal reflections. Take notes on the worksheet and turn it in at the beginning of class. It will be graded and returned so you can use your notes for the class activities. All materials are on www.caraleemath.com.

Class Activities: Most of your time in class will be spent on group activities and problem solving. It is important to find the right pace for you and the quality of your work is just as important as the quantity of work.



Quizzes: A short quiz will be given each week as indicated on the course calendar. Complete your online homework first and then study for the quiz. Memorize any formulas and make sure you can do each type of problem without notes or a calculator (if indicated in class). The quizzes will help you to stay up to speed and prepare for the tests in smaller chunks.

Tests: There will be two midterm tests and one final comprehensive exam as indicated on the course calendar. Part of each test will be taken without a calculator so be sure to practice do your online homework without a calculator. You will need a calculator that is not a phone for each test. Tests will begin promptly at the beginning of the class period.

Extra Credit Policy: A few bonus problems may be given during the term, about 10 points or 2% of the course points. Extra credit is not a substitute for regular course work.

Believe in yourself and all that you are. Know that there is something inside you that is greater than any obstacle.

~Christian D. Larson

Important College Policies and Information

Title IX/Non-Discrimination: Portland Community College is committed to creating and fostering a learning and working environment based on open communication and mutual respect. If you believe you have encountered sexual harassment, sexual misconduct, sexual assault, or discrimination based on race, color, religion, age, national origin, veteran status, sex, sexual orientation, gender identity, or disability please contact the Office of Equity and Inclusion at (971) 722 - 5840 or equity.inclusion@pcc.edu. You can read more and find a confidential reporting form at <http://www.pcc.edu/about/equity-inclusion/>.

You are also welcome to talk to me, just know that all instructors are mandatory reporters for Title IX and child abuse issues to the college. You may speak with designated confidential people such as counselors in SCOM and staff in the Women's Resource Center and the Queer Resource Center. I would be happy to walk with you to the place of your choice.

Sanctuary College: PCC promotes the success, dignity, and worth of every individual by providing a safe environment where the examination of divergent ideas, experiences and systems of inequality adds depth to the learning experience. PCC strives to provide opportunity to all students and the appropriate level of support services to ensure the highest level of success. For more information and resources, see <https://www.pcc.edu/resources/undocumented-students/>.

FERPA (Family Education Rights and Privacy Act): You have the right to privacy of your personal information and educational records. I can only send email to your secure MyPCC email account so that I am communicating with you confidentially. Parents, spouses and others will not be given information about you without a signed form.

Accessibility: PCC is committed to ensuring that classes are accessible. Disability Services works with students to minimize barriers. If you are working with Disability Services I will be happy to work with you, just let me know. If you may need an accommodation you can start the process at www.pcc.edu/resources/disability.

Inclement weather or emergencies: Campus closures will be announced on www.pcc.edu, and the college switchboard, 971-722-6111. You can sign up for text alerts at <https://www.flashalert.net/id/PCC>

Registration and Dropping: Students may attend this course only if registered. Students who are unable to attend must drop the course online or through the Registration Office. To have tuition charges removed, the course must be dropped by the student before the drop deadline posted on MyPCC and in the class schedule. Students who stop attending without dropping will receive a grade of F due to college policy.

Drop and Withdrawal Deadlines: www.pcc.edu/registration/dropping

Pass/No Pass Grades: Choose a grading option of letter grade (A-F), or Pass/No Pass (P/NP) via the computer registration system by the deadline posted by the college. Talk with your advisor as some degree/certification programs may not accept Pass/No pass grades.

Incompletes: Incompletes are rarely given, and allowed only if at least 75% of the work is already completed, with a current grade of "C" or above. A contract for completion must be signed by the student and instructor to receive an incomplete.

Audits: Students must obtain instructor permission to audit a course by the deadline posted by the college.

Academic Integrity: Being a successful student and living successfully requires you to develop a strong sense of personal and professional integrity. Completing your own academic work is a requirement of PCC. Students that engage in any form of academic dishonesty may receive a zero for that test or assignment. Further academic dishonesty may result in an F for the class and charges for violation of the Student Conduct Code.

PCC Grading Guidelines:

<http://www.pcc.edu/resources/academic/standardspractices/AcademicStandardsandPractices-GradingGuidelines.html>)

Student Rights and Responsibilities Handbook:

<https://www.pcc.edu/about/policy/student-rights/>

Southeast Campus Resources <https://www.pcc.edu/resources/#student>

Library

- Checkout books, calculators, laptops, 1st floor desk
- Tutoring Center and Computer Lab, 1st Floor
- Reading and Writing Center, Library 218

Tabor Hall

- Student Resource Information: ASPCC Hub
- Panther Food Pantry and Emergency Bus Tickets: Tabor 105
- Career Exploration Center: Tabor 147
- Women's Resource Center and Lifetracks Program: Tabor 148
- Queer Resource Center: Tabor 149
- Multicultural Center: Tabor 150
- Bike Rentals, Childcare Grants, Clubs, ASPCC: Tabor 152

Student Commons Building (SCOM)

- Veteran's Resource Center: SCOM 110
- Disability Services: SCOM 112
- Counseling, up to 8 free sessions: SCOM Info Desk or 971-722-6240

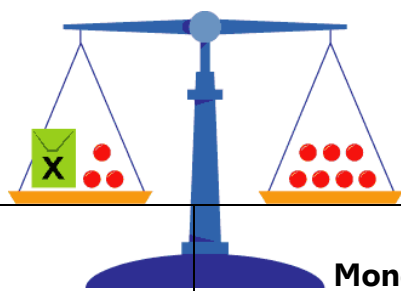
PCC Links

- Free Online Tutoring: www.pcc.edu/resources/tutoring/etutor/
- Emergency Grants: <https://www.pcc.edu/enroll/paying-for-college/emergency-funds.html>
- Childcare Center: <https://www.pcc.edu/resources/child-care/>

Community Resources

- Call to Safety, 503-235-5333, <https://calltosafety.org/resources/>,
- <https://www.auntbertha.com/>, <https://211.org>
- Columbia County Mental Health Line, 503-397-6161
- Washington County Crisis Line, 503-291-9111
- Yamhill County Crisis Line, 503-434-7523
- Clackamas County 24-hour Crisis Line, 503-654-2288





Math 60 Calendar

	Monday	<i>Webwork Due Tues by 11:59 pm</i>	Wednesday	<i>Webwork Due Sun by 11:59 pm</i>
Apr 2, 4 Week 1	Course Introduction 1.1, 1.3 <i>Student Info Sheet handed out</i>		Student Info Sheet due Quiz 1 1.2, 1.4 <i>Scavenger Hunt handed out</i>	<i>Webwork Orientation, 1.1, 1.3</i>
Apr 9, 11 Week 2	1.5, 1.6, 1.7 <i>Math Identity assignment handed out</i>	<i>1.2, 1.4</i>	Quiz 2 2.1, 2.2	<i>1.5, 1.6, 1.7 Chapter 1 Review*</i>
Apr 16, 18 Week 3	Math Identity Paper Due 2.3, 2.4	<i>2.1, 2.2</i>	Quiz 3 2.5, 2.6 <i>Review 1 handed out</i>	<i>2.3, 2.4</i>
Apr 23, 25 Week 4	2.7, 2.8	<i>2.5, 2.6 Chapter 2 Review*</i>	Scavenger Hunt due 1st Midterm (Chap 1-2.6)	<i>2.7, 2.8</i>
Apr 30, May 2 Week 5	3.1, 3.2 <i>Midterm Self-Assessment handed out</i>		Midterm Self-Assess due Quiz 4 3.3, 3.4	<i>3.1, 3.2</i>
May 7, 9 Week 6	3.4, 3.5 <i>Review 2 handed out</i>	<i>3.3</i>	Quiz 5 4.1, 4.2	<i>3.4, 3.5 Chapter 3 Review*</i>
May 14, 16 Week 7	2nd Midterm (Chap 2.7-3.5)		4.3, 4.4	<i>4.1, 4.2</i>
May 21, 23 Week 8	4.5, 4.6	<i>4.3, 4.4</i>	Quiz 6 4.6, 4.7	<i>4.5</i>
May 28, 30 Week 9	Memorial Day Holiday College Closed	<i>4.6, 4.7</i>	Quiz 7 4.8, 4.10	
June 4, 6 Week 10	4.9 and Catch-up <i>Final Review handed out</i>	<i>4.8 Chapter 4 Review*</i>	Quiz 8 Class Celebration and Review for Final	<i>All Chapter Reviews*</i>
June 11, 13 Finals Week	Final Test (Cumulative)		No Class Have a great break! 😊	

** Webwork Chapter Reviews are optional and can be used to make up points lost in other assignments. They will stay open until the final test.*

Tentative Calendar: The schedule or assignments may change during the term due to the class circumstances, weather or institutional closures. Any changes will be announced during class and online. Be sure to contact a class member and/or the instructor if you are absent.