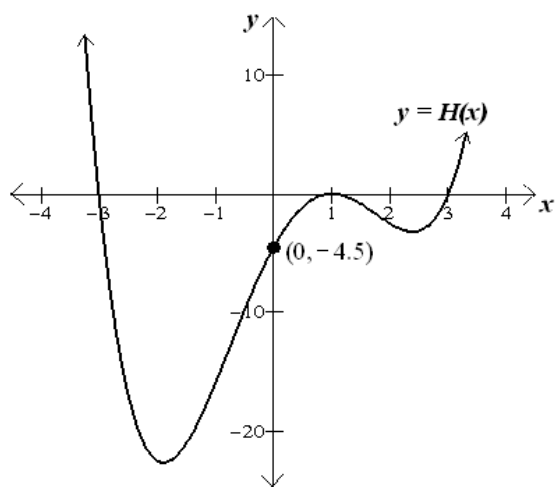
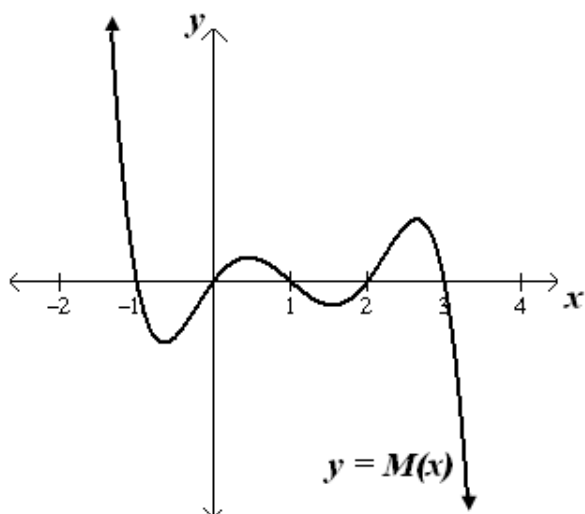


1. Find a possible formula for the functions graphed below. (Check your answer by graphing on the calculator.)

a.



b. Find a possible formula given that $(-2, 960)$ is a point on this graph.



2. Given the following information about a polynomial function, find a possible formula (check your answers by graphing on the calculator).

a. f is third degree and $f(6) = -36$.
The zeros of f are 0, 5, and 8.

b. g is fifth degree and $g(2) = 144$.
The zeros of g are -2 , 1 , 4 , and -1 (multiplicity 2).